

The Heron

Community Magazine

May 2019

Delivered to homes in Christchurch, Euximoor and Tipps End - £1 where sold

No. 61

Your Heron Needs You!

In this issue!

Christchurch in Bloom	2
Community Info	3
Editorial	3
Diary Dates	4
Letters to the Editor	5
Parish Lunch History	6
Arts - Welle Cinema	7
Arts - Jazz Club	7
What's the BUZZ?	8
Stronger for Longer	9
Clubs Pages	12 & 13
CFRS	14
PC Snippets	16
Newbie Blog	17
Vet's View	17
Car Shows	18
Church Mouse	18
My Favourite Ever	19
Favourite Verse	19
Wake Up Call!	22
Church News	22
Townley Page	23
Useful Numbers	26
And Finally	26
Alan Norris Big Band	27
Belated Easter Treat	28

**Please come along and support us
at our forthcoming Fundraisers!**

See pages 2 & 27

Editorial Team:

Richard Guilford – Editor

Linda Webster – Treasurer & Ad. Manager

Support - Hazel Crawford, Derek Randall-Hall, Lewis Bennett, Annie Nason, Sandra Kay & Team

Website:

www.theheron.info

Enquiries:

editor@theheron.info / 01354 638990

adverts@theheron.info / 01354 638124





Christchurch in Bloom!

Easter was early this year! And with all the mild weather we've been having since Christmas, Spring has come early too! Or at least all the plants, trees and shrubs seem to think so!

So - following our hosting of the extremely successful Village Plant Sale of last year, by popular demand, we have decided to hold this year's over the forthcoming Bank Holiday Weekend, and extend it over the three days - **4th, 5th, and 6th of May (See details opposite).**

With the promised good weather you should all be able to get those bedding plants in and have all your gardens looking lovely a bit earlier than usual this year. We promise lots of really good bargains as usual as well as some exceptional Raffle Prizes. I am pleased to report that we have managed to secure a large selection of the wonderful roses that proved so popular last year. We can offer climbing, shrub, and dwarf varieties in a range of stunning colours. Also assorted vegetable plants. Plus much, much more!

Don't forget there will be **our famous and ever popular tasty Cream Teas!** And a convivial and friendly atmosphere. Why not join us for lunch and peruse all the plant bargains?



The Heron presents a

"VILLAGE PLANT SALE"

BANK HOLIDAY WEEKEND

4th, 5th, & 6th May

The Old School,
Christchurch

17, Church Road, Christchurch PE14 9PQ

10.00am to 4.00pm

EACH DAY

COME EARLY FOR BARGAINS

CREAM TEAS & RAFFLE

Why not join us for lunch?

Filled rolls & baguettes,
Cakes & biscuits
Tea Coffee & soft drinks

**ALL PROCEEDS TOWARDS HERON FUNDS
PLEASE COME ALONG AND SUPPORT US!**



PLEASE SEE ALSO DETAILS OF OUR FORTHCOMING FUNDRAISER ON PAGE 27 FOR A GOOD NIGHT OUT!

Community Information

Mobile Library: First Tuesday each month - in the lay-by Upwell Road - 12:15 - 12:45pm. Forthcoming dates are: May 7th, June 4th, and so on.

Mobile Post Office:

Visits Mon to Thu in the lay-by Upwell Road.
Monday and Thursday - 16.30 to 17:00pm
Tuesday and Wednesday - 16.10 to 17:00pm
Fridays - no service

Community Car Scheme: This scheme has two drivers living in the village. It can be used by anyone who either do not have their own transport or who would like someone to take them for medical, social journeys, or shopping. Transport is door to door and passengers make a contribution to the cost. For more info or to book a journey call Angie 01354 638721.

BIG BREKKIE 2019

JOIN US AT OUR CHRISTIAN AID BREAKFAST! SUNDAY MAY 12TH
Christchurch Community Centre
FROM 9am - Last orders at 10.30am.
ENJOY! Breakfast will be followed by



our 11am Church Service, in the same place - not in the Church. But if you wish you can just come for

breakfast.
NO CHARGE, but any donations you may wish to give will go to Christian Aid. Please come along and support this great Charity, which does so much to enable people worldwide to live healthier and more meaningful lives.

ANYONE AND EVERYONE WELCOME!



Lunch Break Dates for May -

Held at our Community Centre **Wednesday 8th** with Age UK Coffee Morning beginning at 11.00am, & **Wednesday 22nd** Bring what you fancy. Tea, Coffee, and Soup provided. Always a very sociable occasion. Meet with your friends and make new ones too. Arrive when it suits you from 12.00pm to 2.00pm.
ALL WELCOME

Defibrillators - We are fortunate to have two of these machines in Christchurch. One is located on the side of Townley School Dining Hall, facing the Car Park, in Crown Road; the other is on the front of the Community Centre in Upwell Road.

EDITORIAL

Hi there one and all!

Busy month this month, well for all of us here at The Heron anyway! We've our **Village Plant Sale over the Bank Holiday Weekend - 4th, 5th, and 6th of May**, then on **Saturday 18th May The Alan Norris Big Band** will be presenting **A Really Great Night Out** with Special Guests too, and filled jacket potatoes served during the interval. What more could you ask for? Please see the full colour ad. on page 27 for full details. We hope that you will all come along and help support your Community Magazine at these events. On September 21st we will be presenting **HeronAid II** hopefully building on the success of **HeronAid** back in 2014 which you all seemed to enjoy! One amusing memory from that event, which overran, finishing a little before 11.00pm, was when Florrie, God bless her soul, jumped on her zimmer at the end saying "I've got to rush home now. My carers are coming at 7.30 in the morning!" She and many others thoroughly enjoyed themselves. There was even dancing in the isles! So that's something to look forward to later in the year.

The previous Sunday, May 12th, we have the wonderful **BIG BREKKIE for Christian Aid, and it's FREE too!** So we hope as many of you as possible will attend this worthwhile cause. There is also a service afterwards as you can see opposite if you would like to stay on afterwards.

So, apart from all that, there's all the usual features plus one or two other interesting additions, including part two of Malcolm Hicks & Elaine Reed - Hughes' article on the history of the Parish Lunch.

Enjoy! 'Till next time!

Restored

DIARY DATES

Abbreviations for commonly used venues:

TS = Townley School, CCC = Christchurch Community Centre, (new Hall)

TH = Three Holes Village Hall, UH = Upwell Village Hall, WH = Welney Village Hall

Weekly events

Mondays Pop-Up Coffee Shop - 9.00-11.30am - CCC

Pilates - each Monday - 6.30-7.30pm - CCC

Wednesdays Forever Active-“Strength and Balance” - 9.30 to 10.30am - FIRST CLASS FREE- CCC

Wednesdays Rainbows & Brownies & Guides 5-15pm onwards - CCC

Fridays “Coffee, Cake, and Chat” - 2.00 - 3.00pm - Parish Church - ALL WELCOME

Fish and Chip Van visits - outside Dun Cow - 5.00 - 8.00pm

General events

May 4th-6th Christchurch Village Plant Sale-Cream Teas & Refreshments-10 till 4 The Old School

May 7th Mobile Library visits in lay-by on Upwell Road - 12.15pm till 12.45pm

May 7th Art Club - 1.30pm till 3.30pm - CCC

May 7th Craft Club - 7.00pm - CCC

May 12th Christian Aid Breakfast at the Community Centre followed by 11.00am Service

May 12th Welle Cinema - “Green Book” - Doors open 1.30 for 2.00pm film, £3 per head - TH

May 14th Art Club - Acrylics - I can bring mine for you to try - 1.30pm till 3.30pm - CCC

May 14th W.I. - Resolutions, Games & Chocolate Tasting - 7.00pm - CCC

May 18th Heron Fundraiser “The Alan Norris Big Band”- 7.00 till 10.00pm- £7.50- CCC See p27

May 21st Gardening Club - “The Pickwick Papers & The Fens” with Mike Petty - 7.00pm - CCC

May 26th Jazz Club - Smooth Cocktail Jazz - 12.30 till 2.45pm - £6.50 CCC - See page 7

May 28th Art Club - Watercolour Wet in Wet. Washes/Flowers etc - 1.30pm till 3.30pm - CCC

May 28th Book Club - “Brave New World” by Aldous Huxley - 7.00pm - Sue’s, 5, Fen View

June 9th Classic Car & Motorcycle Show - 10.00 till 4.30 - CCC Playing Field - See page 18

Parish Church Services

May 5th 10.00am A Day All Age Worship

May 12th 11.00am Rev’d L Brady Service in Community Centre

May 19th 6.30pm A Day Evening Prayer

May 26th 11.00am S E Tooke Morning Prayer

June 2nd 11.00am A Day All Age Worship

Every Friday 2.00 - 3.00pm Coffee, Cake and Chat in the Church building Daphne and Andrew

PLEASE NOTE — The Heron May Deadline

*The deadline for all copy for June’s edition of The Heron is **25th May**. * However, due to the amount of copy we are getting, leave it till then we may not have space. So -

AS EARLY AS YOU CAN PLEASE !

Advertisers - all our advert rates and conditions can be found on our website www.theheron.info Business advertisers can book series of 6 or 12 adverts, paid in advance. Adverts for village fundraising events, personal announcements, or small private ads are usually free.

At the time of going to press, all information is as accurate and up to date as we can make it. Changes and updates may be published subsequently. All information contributed by outside agencies, including dates etc., will be assumed to be correct.

NB as a matter of courtesy no content from the Heron should be used without prior permission

Letters to the Editor



Dear Richard,

Sad news of the very recent passing of Rachel Watson, formerly of Syringa House. She moved to Chatteris in 2015 and settled in very happily there.

Rachel was well known over her years in Christchurch, not the least because of she and her family's running of the Village Post Office before its closure.

A well known village character she is much missed by friends and neighbours, and those who knew her well.

Her funeral service will be held on Friday 10th May, 1.30pm at March Crematorium for those wishing to attend.

Regards

Ann Mortlock

Redbricks

Dear Richard,

Following my reading of 'Critics Corner' in last months Heron, it prompted the memory of an idea that definitely worked back in Milton Keynes.

There is, I believe land available to the rear of the two new houses In Upwell Road, Christchurch which I think was originally intended for use as allotments? However, even if this was not the case, could it be used as a dog walking area?

In Milton Keynes there is a large fenced off field/paddock which is specifically used for exercising dogs. You book an hour for a cost of £2.00 and, obviously, have to clean up after your pooch when necessary. The proceeds in MK I believe, go to the Parish Council. In Christchurch the monies generated could go either to the Parish Council or to benefit our Community Centre.

The only initial cost for such a scheme would be to fence off the area. This could be done fairly cheaply with a simple pig-wire fence or somesuch. Perhaps local dog owners might consider contributing to the cost of this?

With the amount of dogs that we have in Christchurch I am sure such a scheme would prove quite lucrative, and would be of great benefit to both dog owners, and the rest of the village also, by limiting any dog fouling 'accidents' around the village!

It would be interesting to hear the Parish Council's views on this, or indeed any other views or support from other villagers, whether dog owners or not!

Shirley Knight

Four Seasons

Hi There,

On Saturday 30th March my 7 year old Daughter, India Norman and her friend William Brazil, decided to do a litter pick with her Dad Steve Norman, on the playing field. India had gone to the play area the previous week and was disgusted with the amount of litter that was there and so decided to go back the following week and pick it up, she managed to talk her friend William into going as well and when I put it on the local Facebook Group some other volunteers turned up to help, including Michael Brookes, and District Councillor Will Sutton who brought rubbish bags to be filled.

They all did a great job, I've attached some pictures for you, any question please feel free to contact me.

Kind Regards

Claire Norman



A Brief History of the Christchurch Over 65s Parish Lunch (Part Two)

(Continued from last month)

Since the start, it appears that there has always been some sort of entertainment provided after the meal and records show this could range from local amateur concert parties, comedians, magicians, bands, singers, organists and even Elvis from Upwell! It is only in recent years that funds have allowed professional entertainers to be booked.

Top two photos are
The Old School
Circa 1950's



Hospitality and camaraderie amongst committee members remain as strong to this day, with committee meetings in members' homes, along with the after-lunch party always going down well after all the organising, arranging and serving is done.

Since 1956 the records show that funds were raised for this annual event by holding fund-raisers and social events throughout the year (as we do now) but later saw donations coming from local farmers and businesses, collected by the committee members. This collection of funds proved to be a very unpopular task by the committee and so in 1980, at the Playing Field Club, the first Sausage Supper was held. Tickets cost £2 and the event proved to be a massive success both socially and financially. So, the Sausage Supper in itself is a Christchurch Tradition which still proves very popular and continues to raise a large percentage of the funding needed for the lunch to this day.

Committee members, who have reached the appropriate age, resign from the committee but have always been invited to enjoy the event along with the other village residents, vicars, rectors and even local doctors.

The venue for the event has changed many times over the years – starting out in the Old School followed by the Social Centre – which was renamed the Memorial Hall. Some of you may remember the Memorial Hall on Church Road but this became unsafe for use and was demolished in 2014. Three Holes Village Hall was used whilst plans were being made and building work completed on our very own Community Centre – which opened in April 2016.

Recently the committee decided to change the eligibility age back to 65 and it remains at 65 today.

Guests at the Lunch nowadays can expect a glass of sherry or juice on arrival at the hall, then a three-course lunch with wine, followed by tea, coffee and mints. After lunch we provide some sort of entertainment in the form of a singer, duet or band – with some guests even getting up for a dance!



I find it incredibly nostalgic to see a few familiar surnames on some of those first meeting notes – some with relatives that are still on the committee today and certainly descendants that actually attend the event itself and have already served on the committee in the past. We would like to “Thank You” all for doing your bit in keeping this wonderful tradition alive and Malcolm and I speak from experience when we say that it is an honour and a privilege to be part of this long-running institution and we hope that our villagers-of-a-certain-age continue to enjoy the tradition as much as we have loved being part of putting it together each year.

Long may it continue.

Malcolm Hicks (Committee Member 1979-2008)
Elaine Reed-Hughes Committee Member (2018-present)

[If anyone can shed any more light on this topic then we would love to hear from you.]



THREE HOLES VILLAGE HALL, Junction of Main Road & Squires Drove, Three Holes PE149JY



Sunday 12th MAY 2019, 2pm:

The GREEN BOOK (12a) 130 mins

BAFTA & Golden Globe winning

American biographical comedy-drama film directed by Peter Farrelly. Set in 1962, the film is inspired by the true story of a tour of the Deep

South between African-American classical and jazz pianist Don Shirley (Mahershala Ali) and Tony Vallelonga (Viggo Mortensen), an Italian-American bouncer who served as Shirley's driver and bodyguard.

NO NEED TO BOOK - Admission is £3 per person. Doors open 30 minutes before screening. Refreshments and licensed bar available. Tel. 01945 773710 or 772824

Upwell Jazz Club 2019

Christchurch Community Centre (Sat Nav PE14 9LL)

Sunday 26th May

Guests*: Claire Colton – *vocals*
Myke Clifford – *reeds/vocals*
Nigel Portass – *keyboards*
Phil Brooke – *guitar*
Dave Jackson – *drums*

**Smooth cocktail jazz featuring the voice of Claire Colton.
Music from across the generations –
Songs from Great American Songbook to great modern classics.**

**Time: 12.30pm - 2.45pm Admission: £6.50
Accompanied under-16s Free
Bar, fresh rolls, crisps and savouries available
More information from Nigel Smith on 01945 773121**



The UK's first
guaranteed
banjo-free
jazz club

What's the BUZZ?

Everything seems early this year with all the very mild winter weather we had and an early Spring. As a result honey bees are already getting ready to swarm with much more frenzied activity around the hives. The early flowers will provide a rich source of nectar and pollen as they go about their business aiding pollination.



If you come across a swarm, particularly in your own gardens, PLEASE DO NOT ATTEMPT TO DESTROY IT! For a start you will be asking for trouble as they will vehemently defend their swarm and queen and you, likely as not, will receive multiple stings! However, if left alone they pose no threat as they are more concerned about keeping warm, protecting their queen, and will all have bellies full of honey making them slower anyway.



If you are concerned call me on 01354 638990 and I can come and remove the swarm safely for you. As some of you already know I currently have two hives and hope to set up two more this summer. So, not only would I be helping YOU out but, in turn, you would be helping ME by providing stock for the new hives.

Here is the latest news from a beespokesworker:



"I have to beemoan our lot! We're in trouble! We are vanishing from Britain at an alarming rate and need your help! Many of us are hungry and homeless because the wildflower meadows where

we gathered nectar and pollen are disappearing, and so are places like hedgerows where we used to nest. In fact, due to changing farming practices, 97% of our wildflower meadows have been lost since the 1930's. And the old British patchwork of beautiful fields has changed with very many hedgerows being ripped out! It's absolutely staggering! To add to our loss of habitat we also suffer from the increasing use of pesticides too!

The facts are frightening: 11 bee species in Britain have already disappeared, and many more are in danger. But, thankfully, it's not too late if you act now! You can help save us. Our very good friends at Friends of the Earth have devised a plan to help save British bees like us. If you would consider making a donation today, you'll join a growing community of bee-savers around the country. Why not become a bee-saver before a terrible fate befalls us.

We pollinate 75% of food crop types including strawberries, apples, and tomatoes. In fact, scientists estimate that it would cost £1.8 billion each year to pollinate crops by hand. A service we bees perform absolutely FREE!

If you could kindly bestow a gift of just £15 it would befitting and help prevent further beereavements. Landowners and councils are still not doing enough to prevent bee habitat loss. We know that we can win with your help! The first step is to plant wildflowers in your gardens and communities to help provide food and habitat for our bees. Of course beekeepers are our bestest friends of all!"

Friends of the Earth will send you a **Bee Saver Kit** for a minimum donation of just £5! This includes: a handy folder, a special guide, a pack of British wildflower seeds, a bee identification chart, and an attractive garden planner. **To donate or 'beequest' please go to our website foe.uk/beekeeper or telephone 0800 518051.** Thank you!



RWBG

Stronger for Longer!

Strength and Balance MOTs can Keep You Doing the Things You Enjoy!

Would you like to stay Stronger for Longer? Want to know more about how to stay fit and healthy?

Why not attend one of our **Strength and Balance MOT's**, coming soon to Fenland! The MOT's will contain a series of easy physical tests that can be done sitting down, to highlight areas in which you could improve your strength and balance. You'll also be able to chat with a qualified consultant.

Since the launch of the **Stronger for Longer Campaign** back in October, over 100 new people have joined **Strength and Balance Classes** around the county and are now stronger and steadier. Over 2,300 people have also downloaded our Supersix leaflet, which is helping people to do strength and balance exercises at home at least twice a week.

For more information about Stronger for Longer and to download some exercises you can do at home, go to www.cambridgeshire.gov.uk/strongerforlonger and to [register your interest in the Strength and Balance MOT's in Fenland, please email activefenlandbookings@fenland.gov.uk](mailto:activefenlandbookings@fenland.gov.uk) or call 01354 622498.



PLEASE SEE OUR SPECIAL "NEWSFLASH" ON P.19

To help you stay stronger for longer, there are also classes in the area with Forever Active:

Strength & Balance – Level 3, Christchurch Community Centre Upwell Road, Christchurch PE14 9LL Wednesday 09.30–10.30. Contact Kathleen Henderson: 078805 43821

Strength & Balance – Level 3, Methodist Church Hall, Doddington New Street, Doddington PE15 0SP Friday 13.30–14.15. Contact Becky Adams: 07928 026509

Strength & Balance – Level 3 St Peter's Church Hall, March High Street, March PE15 9JR Friday 14.45–15.30. Contact Becky Adams: 07928 026509

The George Campbell Leisure Centre, March, (PE15 9LT) also has a 50+ Chair Based Aerobics class on Thursdays, 10.30-11.30am.



One attendee to a regular Strength and Balance class said, "The class has helped me with my walking, strength, balance, and posture, along with confidence outside of the class. I can see the difference in myself, I do a lot of walking and since going to classes I am now able to walk that bit longer without any problems – which means I can go out more and enjoy time with my friends".

Active Fenland also run a Forever Fit session at the Hudson Leisure Centre ([PE13 1RL](http://www.cambridgeshire.gov.uk/pe13-1rl)) on Tuesdays, 11.30am-1pm which includes Short Mat Bowls, Table Tennis and New Age Kurling with tea and coffee provided. This is a friendly session open to everyone, just £2 per session.



The Stronger for Longer campaign involves a range of partners, including Active Fenland, Cambridgeshire County Council, local NHS, **Living Sport and Forever Active.**

Stressed, in pain, anxious, sleep-deprived, or generally desiring some self-care?

I offer a non-invasive, non-religious, natural, simple, and safe, form of complimentary healing for the mind, body, and soul.

Suitable for humans and pets.

Hands on/off and

Remote/Distant Healing sessions available.

Reiki promotes self-healing, relaxation and sleep. It can also help to relieve aches and pain, muscle tension, and fatigue. It assists the body to cleanse itself of toxins and helps to support the immune system.

If you are in need of any of the above described, feel free to contact me for further information, or to book a session

Email: michelelowery24@gmail.com

or call 07739 378901

A.R. CLINGO

FUNERAL DIRECTOR

Family Independant
Business

Private Chapel of Rest
Personal Attention

24 Hour Service

Full estimates given at all times

Golden Charter
Funeral Plans



Pinfold House
St. Peter's Road
Upwell, Wisbech
Phone 01945 772502

P R PARKER

Established 1978

General Building and Maintenance

CARPENTRY	REFURBISHMENT	GLAZING
PLUMBING	AND	PAINING
PLASTERING	RENOVATION	DECORATING
BRICKLAYING		RENDERING
ROOFING	01354 638380	GUTTERING

FREE ESTIMATES

All Types - Houses - Flats - Shops - Offices

Pop-Up Café & Coffee Shop

Pop along and have breakfast with us!

We are now offering a
Full English Breakfast
plus sausage, bacon, and/or egg rolls,
using homemade produce,
and locally sourced, free range
meat and eggs where possible.

EVERY MONDAY MORNING

9.00am - till - 11.30am

Christchurch Community Centre
Hot Drinks, Biscuits, Cakes, and Cookies

All Welcome!
We look forward to seeing you!

PLEASE NOTE: With reluctance we will need
to increase our prices from 7th January

BUILDING DECONSTRUCTION

Buildings bought and all materials recycled/
upcycled

Pre 1930s preferred
but all buildings considered
from barns to cottages
including site clearance

FREE QUOTATIONS GIVEN

We have a large number of salvaged
ARCHITECTURAL ITEMS FOR SALE

Bricks & other building materials,
roof trusses etc.

Firewood, plants, and hanging baskets

**COME IN AND SEE US
AND HAVE A BROWSE!**

Call Matt or Sarah Lawrence on
Tel: 01354 638977 or, Mobile: 07856 291787
Toll Farm, Ha-Penny Toll Road,
Three Holes, Norfolk,
PE14 9LJ
Email: buildingdeconstruction@yahoo.com

The Heron presents a “VILLAGE PLANT SALE”

**BANK HOLIDAY
WEEKEND**

4th, 5th, & 6th May

**The Old School,
Christchurch**

17, Church Road, Christchurch PE14 9PQ

10.00am to 4.00pm

EACH DAY

COME EARLY FOR BARGAINS

**CREAM TEAS
&**

RAFFLE

Why not join us for lunch?

**Filled rolls & baguettes,
Cakes & biscuits
Tea Coffee & soft drinks**

**ALL PROCEEDS TOWARDS HERON FUNDS
PLEASE COME AND SUPPORT US!**

Peggy opened the meeting and welcomed everyone including our speaker, Sue Welfare.



Apologies were received from Emily, Tracy, Belinda, Margaret H and Sylvia Mc.

Sue Welfare gave us a really interesting short talk about herself and how she started out with her various Crafts. It turns out Sue is able to offer guidance on a number of Craft topics so we could be seeing her again in the future! Sue then gave us a demonstration on how to make a carnation out of corrugated crepe paper. Members were asked to choose a colour and after a bit of cutting, folding and manipulating, we were all able to produce a lovely flower. Some of us made more than one. We bunched them all together at the end for a photograph (see below). Peggy then thanked Sue for coming and sharing her skills with us.



We then continued the meeting and held a one-minute silence for Alma Hughes. A long-standing WI Member who passed away on 27th March.

The competition was *Something made out of a sheet of newspaper*. Our speaker awarded points as follows:

- 5 points – Kay, Sandra L, Elaine
- 4 points – Belinda, Sheila, Sandra K
- 3 points – Wendy, Beryl

May's Meeting is *Resolutions, Games & Chocolate Tasting* Tuesday 14 May 2019 at 7 pm.

Competition – A Limerick – The Maypole
Raffle – Sheila, Tracy, Janet, Sylvia Mc
Refreshments - Tracy & Marion

Meetings for the rest of 2019:

- June – Annie Nason - *'But you don't look Indian Miss'*
- July – Tony Sigris - *'Acupuncture and Mental Health'*
- Aug – Karen Fleming speaking about and demonstrating Yoga
- Sep – Kay Miller demonstrating Needle Felting
- Oct – Harvest Supper with entertainment by Magician Ricky Locke
- Nov – Christmas Cooking with Lorraine
- Dec – Annual Meeting followed by Dr Maureen James - *'Christmas Custom and Folklore'*

BIKES, BASKETS AND BLOOMS!

Christchurch Gardening Club 

These past few years at the gardening club meetings, we have been lucky to play host to some brilliant speakers. However, Tuesday 16th April saw the club welcome perhaps one of our most inspiring guests Brian Massingham who, to our surprise, was also joined by Penny Stocks and Alan Wheeldon, all active members of Wisbech in Bloom, Penny being the founder. If when you visited Wisbech in 2018 you would have seen buildings, railings and roundabouts adorned with the most stunning flower arrangements, as well as over four hundred hanging baskets, it was all due to these three and their band of helpers and volunteers. Funded in part by the council and from donations, they have won the Gold award from Anglia in Bloom for eleven consecutive years. Part of the criteria for winning the award is community based and this year they have involved the children, teachers and parents from Peckover Primary School, who created six themed gardens on school grounds.

Wisbech park now has an orchard growing all the species of apples this area was once famous for, aided by volunteers living in the town but originating from countries all over the world. Old Bikes are re-painted chained to railings and turned into flower displays all over Wisbech. Alan Wheeldon has become something of an expert on Red Mason Bees. The bees don't sting and are prolific pollinators, although an endangered species they are re-gaining ground thanks to enthusiasts like Alan. BBC2 has just shown a second series featuring Anglia in Bloom and Wisbech in Bloom is featured, the program is available on iPlayer. Tutor Tim Jellis is also featured in the program and he visits our gardening club in October.

After such an illuminating evening our guests had one more surprise up their collective sleeves, when before they left, they gifted the gardening club with plants to make up containers for Christchurch, which we hope to organise soon.

This month the Gardening Club celebrates it's twentieth anniversary with a special lunch for the members which we are all looking forward to.

On Tuesday May 21st Mike Petty is coming to talk about of all things The Pickwick Papers and the Fens circa 1830. That should be another interesting evening. To find out more please contact Marion or Steve on 01354638230.

Christchurch Art Group



We meet in the New Village Hall on the 2nd and 4th Tuesday of the month 1.30 - 3.30

We started back after Easter on 23rd April. Once again we have a varied term's programme planned covering different painting media and subjects.

Our group is friendly and relaxed. We are all enjoying the sessions and have recently welcomed some new members. We look forward to any more new members giving art a try.



We have a tutor to lead us, but we can gain ideas and inspiration from each other. All artists have their own special style and approach so we have a lot of variety and enjoy ourselves.

To cover costs from September (2018) we had a joining fee of £20 per term then an attendance fee of £5 This is reviewed from time to time depending on numbers attending. We welcome any new members, no need for previous experience. We all work at our own level.

Do contact Sandra (638478) or Jan (638217) for more information, or pop along during the session to see what we are up to. **Jan**



Our Demonstrator for this Month was one of our members, Kay Miller. Kay showed us how to do needle felting. Having seen the wonderful 3D felted Witch that Kay made last year, we all thought that we would never be able to achieve anything anywhere near her standard.



But with Kay's excellent teaching skills and patience, we all managed to make a small 2D piece that we were pleased with. I, and several others can't wait to have another go as it proved to be very therapeutic with surprisingly quick results. Thank you Kay.

Next month (May 7th 7pm) we will be decoupageing boxes, photo frames etc. with Elaine Reed - Hughes and Jane Rees. Don't



forget to bring an item to decoupage. We have a few boxes if anyone needs one. New members are always welcome to come along to our friendly club. No previous crafting skills are necessary.

Sandra

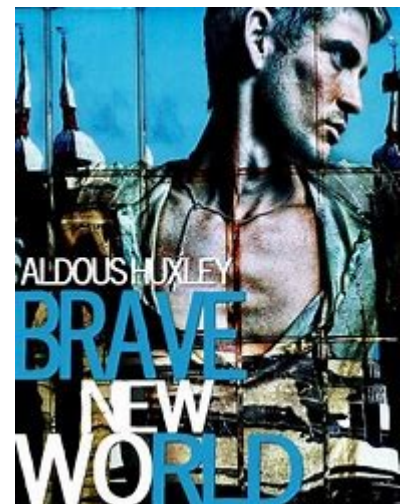
Christchurch Book Club

Book club met on 23rd April. We had been reading "Nine Perfect Strangers" by Liane Moriarty. There were mixed reactions to this book! (not unusual!) The nine main characters meet at a retreat house run by a very beautiful, powerful and rather strange woman. The book describes the experiences the characters have, how they react to them and the impact their stay has on their lives.

Our next meeting will be on Tuesday 28th May, 7.30pm at Sue's, 5 Fen View. We shall be discussing "Brave New World" by Aldous Huxley.

New members are always welcome, we are a friendly bunch! We read one book a month and no one worries if we do not get to the end (either because we didn't like it or that we simply ran out of time!) Books are supplied by the library (although some prefer kindles or audio-books)

For more information please contact Sheila Day on 07946635908.



Cambridgeshire Fire & Rescue Service

Could You Be Our Next Community Champion?

We are looking for volunteers to join our team of Community Champions across Cambridgeshire & Peterborough. As part of their voluntary activities Community Champions support and participate in local initiatives & campaigns, helping to spread the word to local communities about keeping safe. They make a huge contribution to the Service and help work towards the vision for a safe community where there are no preventable deaths or injuries in fires or other emergencies.

Community Champions cover everything from fire safety in the home, to road and water safety, including:

Attending local events -

Representing CFRS at events, such as school fetes, presentations, and community festivals.

Community Fire Station Open Days & Fire Station Car Washes-

Helping out at events and sharing safety advice.

Community fire safety campaigns -

Leading and/or taking part in targeted activities to coincide with safety themes, such as electrical appliance & cooking safety.

Taking part in joint training exercises -

Volunteers can act as injured casualties, concerned bystanders, thus helping to make training scenarios as realistic as possible.

Community Consultation -

Taking part in focus groups during consultation with communities.

Community Champions receive training as part of the role to help develop their skills. The opportunity also gives volunteers the opportunity to enhance their CV's, make new friends, and improve their knowledge of the work undertaken by CFRS.

No previous qualifications or specific skills are needed to become a Community Champion, and CFRS is always seeking people from diverse backgrounds.

This is a rewarding role and one that you can give as much or as little time to as you can spare.

If you would like to find out more about the role of becoming a Community Champion please visit www.cambsfire.gov.uk and you can also follow us on social media or call 01480 444500.

FACTHACTESACT

YOUR COMMUNITY TRANSPORT

ARE HOLDING A CHARITY RACE NIGHT AT MARCH BRAZA CLUB & WOULD LIKE AS MANY OF YOU AS POSSIBLE TO JOIN US FOR LOTS OF FUN & LAUGHTER

WE ARE RAISING FUNDS TO PROVIDE COMMUNITY TRANSPORT SERVICES & BEFREINDING CLUBS FOR OUR REGIONS

ADMISSION - £5 PER PERSON

PLACES ARE LIMITED TO 80 SO BOOK EARLY TO JOIN IN THE FUN TICKETS CAN BE PURCHASED BY RINGING 01354 661234 OR EMAIL

AMY@COTRANSPORT.ORG

WE WILL BE PROVIDING FREE TRANSPORT FOR OUR MEMBERS SO RESERVE YOUR SEAT WHEN PURCHASING YOUR TICKET

SATURDAY 8TH JUNE 2019

FROM 7PM

PRIZES TO RACE WINNERS



MARCH BRAZA CLUB
ELM ROAD
MARCH PE15 8NZ



S & H Painters and Decorators

Tel : 01354 638124

Mob: 07905145680

Steven Horne

Christchurch, Cambridgeshire

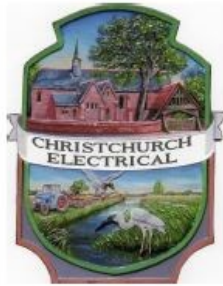
CHRISTCHURCH ELECTRICAL

Simon Freeland Hill Farm, 3 Church
Road, Christchurch, PE14 9PQ

Tel:01354 638802 Mobile:07727 046439



Domestic electrical work undertaken.
No job too small.
Free quotations / estimates.



www.electricalcompetentperson.co.uk

www.electricalsafetyregister.com



Booklet Printing
Business Cards
Digital Photos
Leaflets
Newsletters
Banners

01354 656614

sales@marchsp.co.uk

5 Fenland Walk, March, PE15 8TW

HOUSE CLEARANCE

Christchurch
& surrounding areas

Removals & House Clearance
Garages, Sheds & Attics Emptied
Single Items to Full House
Antiques & Modern Taken
Light Removals
Valuations Given
Best Cash Prices Paid

Call for no obligation quote

01354 638178

GRANARY STUDIO
Christchurch

Contemporary pictures and bespoke framing

The Granary, Hall Farm,
Upwell Road
Christchurch Cambs PE14 9LJ
01354 638614

Parish Council Snippets

Two for the price of one that evening!

1. *The Annual Parish Assembly of Christchurch Parish Council.* (Not many village folk came...sadly).

2. *The April Parish Council Meeting.*

1. There were reports of the work done over the last twelve months: they included Street Lighting (not quite completed yet), and Village Entry Gates on Upwell Road - coming. The Recreation Ground and Hall Charity is to change its remit and name. The process is in hand (Charity Commission). The Parish Council will take over the responsibility of the Recreation Ground, and the new Charity will just be responsible for the Community Centre. Thanks to people who Litter-Pick in the village. The PC has discontinued its monetary support for The Heron, but considers the magazine an asset to our village life. A questionnaire was sent out with regard to having some kind of bus service for the Village. Election date coming up at the beginning of May - and Cllrs Lloyd and Russell will be standing down. The Chair thanked them both for their valued service as Councillors.

2. Here are a few pictures to help us with the second meeting notes ... first, in *Public Time* ...



It would be good to see Police walking through the village.

Thanks to all for the Parish Lunch.
Criticism of PC by email taken on board.

Matters Outstanding:

Moles on the Recreation Ground??
+ Trees need tidying up.



Bus questionnaire - Only 1.3% replied. There are 350 households in Christchurch. Please reply before the next Parish Council Meeting. So far

there is no indication that there is a demand for the bus or for a scheme using volunteer drivers. Mobile speed "camera" for the village is coming! Need volunteers for the SPEEDWATCH scheme - names to PC please.

Our War Memorial will soon look wonderful!

POLICE REPORT IN PERSON, FROM OUR LIASON

OFFICER SUE CLARKE: We have little crime in Christchurch, so we don't see much of the 3 officers who are assigned to the area. It isn't because they aren't working! They go where the crime is. Police Cadets are to start up in the area. They visit the school quite often. 2 Police officers recently joined us at a Monday Breakfast and had chat...but not for a "Full English"!

District Cllr Sutton thanked the retiring councillors for their great contribution the PC, and to our life in Christchurch. They have made a great difference and their dedication and commitment to their role has been outstanding. He wished them well.



Watch out for a chance to talk with a representative of AGE UK .

The Clarke's Report will be in full on the website. FINANCIAL END OF YEAR REPORT will be available at the Annual Parish Council Meeting on May 13th.

EVERYONE IS ENCOURAGED TO ATTEND.

AND REMEMBER TO CAST YOUR VOTE ON MAY 2ND



The Newbie Blog

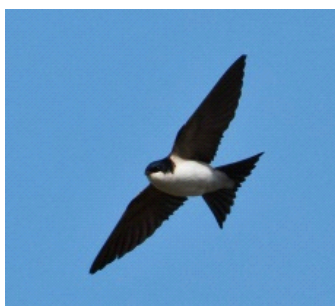
SPRING IS HERE!

I wish I had taken this photograph! Mother Duck and her eleven ducklings crossing the road....I trust they looked both ways before they began. The ducklings are in twos,

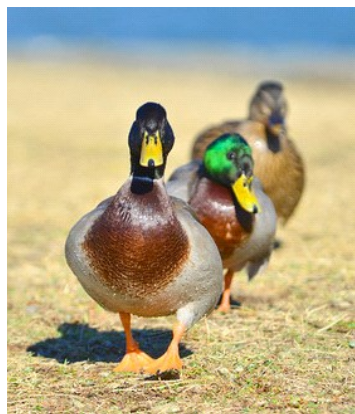


until the final little guy. I notice they aren't in step, so obviously they aren't in military training. How lovely it is to see the young of so many species! I drove to Cambridge the other day and spotted lambs in a field. By the time this edition of the Heron goes out, there will be all sorts of animal and bird youngsters around. And the Swifts, Martins and Swallows will be on their way here from Africa. Tiny birds but huge distances. Just amazing.

I have an ambivalent relationship with the saying ***"Having all your ducks in a row"***. I love the saying. It is so



expressive of what it describes. I am always impressed with people whose lives show that they have "all their ducks in a row"...they have things sorted...it's all nice and tidy; in order: but however hard I try, I cannot get all MY ducks in a row. I can only say that I do my best...but often fail miserably. The up side of that is that I am not often



phased when something crops up which demands my attention away from the tidy thinking I aspire to; whereas my tidy friends panic somewhat when, as they see it, spanners are thrown in the works. I quite enjoy the "fuzzy edges" ...the things that don't quite fit in the box, if you like. Where do you stand in this, I wonder? There is space for us all, of course. I suppose the trick is to be able to understand each other; rub a few of our corners off; be accommodating.

Annie

Vet's View

by Nick Wojciechowski



Spring is the time when wildlife becomes active, we see more wild animals on the roads and sometimes in our gardens or in the fields. Sometimes we see an injured or orphaned wild animal. I would like to briefly discuss the safety of dealing with such situations.

First of all please remember that wild animals are afraid of people. They might try to run or, if cornered, attack. Always make sure that you can safely approach the animal, without risking your life and health. If in doubt how to handle the situation please contact a local veterinary practice, RSPCA on 03001234999 or Fenland Animal Rescue on 07902167296. They will be in a position to advise on how to best handle the animal and whether it really needs rescuing.

When it is safe to do so please approach the injured animal wearing gauntlets as depending on



the species they can have sharp spikes, claws, talons or teeth. Wild animals can also carry a number of parasites and diseases therefore one should never approach them with bare hands. Please only lift them when it is safe to do so and you are certain you can handle them. Once collected the small wild animals should be placed in a well padded cardboard box with some ventilation holes. Please never try to lift larger species like badgers, foxes and deer. They can be extremely dangerous and should only be handled by trained people.

If you find a baby animal that appears to be orphaned please don't approach them unless they are in clear danger to their



life, i.e. trapped or trying to get onto a road. As above please contact an appropriate helpline where you will be given advice on how to approach the animal and whether it seems to be in danger in the first place. Many animals that seem to be orphaned are actually being looked after by their parents.

Nick

CHRISTCHURCH COMMUNITY CENTRE DIARY DATES FOR 2019 CLASSIC CAR AND MOTOR CYCLE MEETS.

SUNDAY 9TH JUNE 2019

SUNDAY 8TH SEPTEMBER 2019

DOORS OPENING FROM 10.30 AM UNTIL LATE AFTERNOON

CAR BOOT & AUTO JUMBLE PITCHES, INDOOR STALLS WILL BE AVAILABLE.

BBQ / HOG ROAST,

COMMUNITY CENTRE BAR WILL BE OPEN AND OUR KITCHEN WILL SERVE TEA, COFFEE AND FOOD.

Please Follow Facebook page:- Christchurch Community Centre & register attendance



Christchurch Community Centre , Upwell Road ,
Christchurch near Wisbech. Cambridgeshire PE14 9LL

Crumbs from The Good Book

By our very own Church Mouse....

Have you ever run in the opposite direction when you have been faced with something you really don't want to do? I have. There's a great story in The Good Book about someone who did just that. I believe his name was Jonah. Apparently, God told him to go to a city called Nineveh, which was full of wicked people doing terrible things. "Tell them to say sorry and change their ways and do the right thing", says God. "Otherwise they will be destroyed in 40 days!" I think Jonah thought they deserved to be destroyed. "If I tell them to be sorry, and they change their ways, they won't get the punishment they deserve. I'm not having any of that", he said to himself, so he headed in the opposite direction.

Well!... long story short, he went on a boat; there was a storm; the crew and passengers drew straws to see who was responsible for



the misfortune; Jonah drew the short straw; they hurled him into the sea; he was swallowed by a big fish; after 3 days in the whale, he was spat out on to dry land.

This time he *did* go to Nineveh, and gave them God's message. And the people, led by their King, turned from their bad ways and God forgave them. They weren't destroyed. Jonah was furious, as you might expect. "I *knew* you would deliver them from destruction. I just knew it!" he shouted at God. "I knew you were loving and forgiving. You forgave them!"

My, was he in a temper! The sun was hot so he sought shade under a bush, but the bush died overnight so he had no shade the next day. He shouted (again!) at God. "Why couldn't you have had mercy on the plant, instead of destroying it?"... and God said something to the effect that Jonah was quite ok with showing mercy on a plant, but not on residents of Nineveh. Ooooh. Ouch.

Come to think of it, Easter was at the end of last month. Isn't all this what Easter is about? Forgiveness, I mean. Now, THERE's a thought.





OH NO!
Our Wednesday morning hour-long exercise class **MAY HAVE TO CLOSE !!** There aren't quite enough people to make it a viable enterprise.

A great class to help us older folks keep active for longer...strength and balance exercises, and chair-based for the most part. (Great if you are recovering from surgery). We only need a couple or three more people to join us regularly.....men or women ... So how about it?? It is a lot of fun too.
COME ALONG at 9.30am to the Community Centre every Wednesday.... PLEASE ...

My Absolute Favourite of All Time!...

My Favourite Pony? By Sheila Day



No, the title can't be "My favourite pony". You can no more have a favourite pony than a favourite child and Welly was one of three! *But Welly was a very special pony...*

Welly came to us in 2006, he was 15 years old and was an ILPH (International League of protection) loan pony. This

means he was a rescue pony and we looked after him for the charity. We weren't told much about his background, but it seems he had been used for driving but got a bit stiff in the back legs and ended up in need of rescue.

From the start Welly was a gentle soul; he was very slow (probably due to his stiff back legs) which made him a perfect learner pony for small children. I have lost count of the number of children who rode Welly in and out of beer crates in our ménage, delighted that he would respond to their directions. Welly was their first ride and they will treasure those memories.

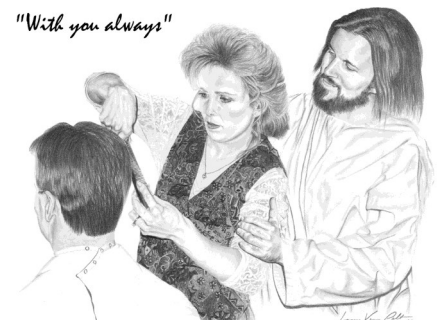
As the years went by, Welly got stiffer and winters took their toll; he lost weight and struggled to regain it. In January, he was having trouble getting up after lying down and we feared that the end had come, but thanks to his indomitable spirit and my friends turmeric paste recipe, he rallied and enjoyed 3 lovely months of spring weather. Then on Easter Monday, he could not get up and even when the vet gave him very strong painkillers, he did not have the strength to stand. So it was time to say "goodbye".

So...a very special pony who will be missed by all who knew him.

Favourite verse for May 2019



Rev'd Lynda Brady's favourite verse from the Bible is part of the very last verse in St Matthew's Gospel...the bit where Jesus says **"I will be with you always, even to the end of the age"**. She says it is so special because it is a promise that no matter what happens in our lives, there is nowhere we can go where Jesus will not be with us: in our good times, or our darkest times, emotionally, physically, mentally, spiritually...nowhere!



caters for all occasions
music from the 70s to 2000s

M & K Roadshow

Martin
Mobile Dj

01354 638615
07479943870
turbo.bruce586@gmail.com

Maximise the enjoyment
of your home
With the professional help of

Brimstone Garden Design Services

Bespoke Garden Design
to suit your
personal requirements

for free estimates
contact Cliff, on
01354 638217 or
078 08078518

cliff@brimstonegardendesign.com

Beauty Treatments

By
Jane

N.V.Q. – i.b.d. – Babtac

LCN Microdermabrasion Facials
NEW Oxygen regeneration Facials - less
outlay than Botox (a celebrity favourite)
NEW Non-surgical firming lift and tone
St.Tropez Spray tanning
Gel pedicures
Shellac manicures
Week-end & semi permanent
eyelashes

Rose Cottage,
Christchurch
Telephone: 01354 638378



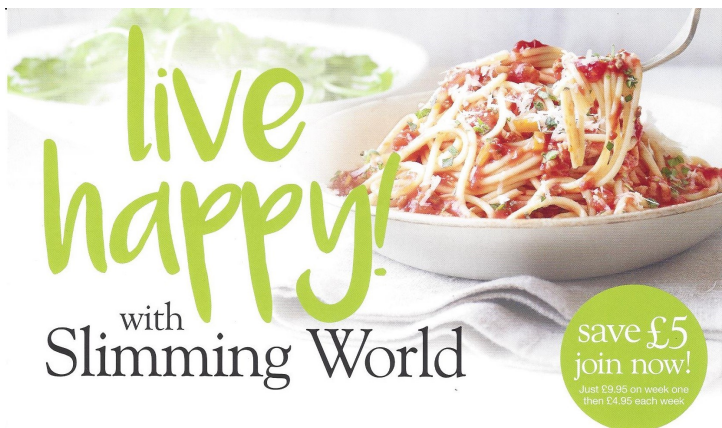
Paul Braybrooke

Oil Fired Boiler Engineer

Boiler Servicing & Breakdown Service

Commissions
Tank Replacements

Phone 01353 777788
07946 735691



with
Slimming World

save £5
join now!
Just £9.95 on week one
then £4.95 each week

DODDINGTON
MONDAYS 9:30 AM, 11:30 AM,
3:30 PM, 5:30 PM + 7:30 PM
DODDINGTON VILLAGE HALL,
BENWICK ROAD
TEL: DIANE 07707 547604
WWW.SLIMMINGWORLD.CO.UK/
SLIMWITHDYNAMICDI
OPEN BANK HOLIDAY MONDAYS

find this delicious recipe online
[slimmingworld.co.uk](https://www.slimmingworld.co.uk)



FOUR SEASONS TREE SERVICES

Qualified & Professional Tree and Client Care



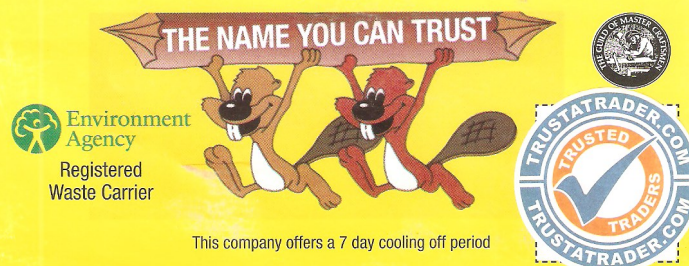
PRUNING ● LOPPING ● FELLING
 PLANTING ● REDUCING & RESHAPING
 CROWN RAISING ● HEDGE TRIMMING
 THINNING ● POLLARDING ● STUMP REMOVALS
 OVERGROWN GARDENS PUT BACK INTO SHAPE
 FRUIT TREES TREATED ● LOG & WOODCHIP SALES

FREE ESTIMATES & ADVICE WITH NO OBLIGATION
 For quality jobs at a competitive price call:

Home: 01353 721665 - Mob: 07771 707921

All work carried out to BS 3998 Standard

A genuine family managed business est. for over 30 years - Fully Insured



L.W Vehicle Services
Car & Commercial repairs



Est 2003

- ~ Electrical and Mechanical Diagnostics and Repairs
- ~ MOT Preparation & Testing
- ~ Servicing and Inspections
- ~ On Site Service
- ~ Breakdown / Recovery Service
- ~ Van and Car Sales

Contact Lee on 07717 738796 Or Tel 01354 610172
 March Road, Welney



MOBILE CATERING

Freshly cooked fish & chips,
sausages, chicken and pies.

Every Friday at the Dun Cow
from 5.00 'til 8.00 pm.

Call 07756 170 700

to book us for your
 party, function
 or fund raiser.



It is Time for a Wake Up Call!

As I turned towards my bedside radio alarm clock it said 6.55am so I thought I would catch the 7 o'clock news, but the presenter suddenly surprised me with the announcement that it was 8.55am. I looked again at the clock and then my watch, it was definitely 6.55am. The presenter then apologised for giving out the wrong time and I wondered how many listeners had momentarily believed the announcer thinking they were late for work or another important appointment. This then began a discussion in my head as I had my breakfast and I started to think through some of the occasions when I felt I had lost time. It is easy to get carried away with activities, such as emailing, washing dishes, writing a sermon or Googling. The minutes just whizz by never to be claimed again and before you know it, an hour or two has passed us by.



Just recently I had one of those heart to heart conversations that a minister has from time to time with one of the dear saints of the parish, who senses that she's getting closer to being with her Lord. I asked what she regretted most in her life, she replied it was failing to spend enough time with those she most loved and cared about. She thought that she had wasted too much time on trivial things that on reflection had no real value.



When we lose time, we can never reclaim it back it's gone for ever. If we don't value our time and use it wisely we end up being disappointed, as we look over the years, as we reflect on missed

opportunities and missed moments. As we remember lost times we end up trying to confront old problems and try to come to terms with old resentments, which because of the passing of time we have not dealt with in a way that we should have, or wished that we could have and even if we wanted to do something in the here and now we can't because time has moved on.

We need not be anxious about the past and the events and moments which have passed in that time. For we can change our approach to our future, for the Bible points out that 'There is a time for everything' (Ecclesiastes 3:1NIV), including the realisation that time is precious. It is never too late to make the most of our time and to take action to prevent future regrets. Challenge yourself today, ask yourself how can I best spend my time today.

Ian

On a more personal note. I would just like to take this opportunity in thanking those of the six Fen church's and their community's for your kindness and pastoral help during this time of enforced recuperation. I'm in high spirits, on the mend and feel greatly loved...

Church News

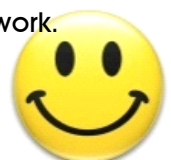
Our Lent Prayer Project was shared by a number of people. That is great news!

Our Lent Lunches went well. One in Sheila and Andy's home (Thank you!); and one in our Church after the morning service. This was a United Service for all the Six Fen Churches, and about 30 people stayed for the lunch, though more attended the service. A big THANK YOU to the soup makers.

Over both events, we collected £134 for The Ferry Project in Wisbech, and two boxes of non-perishable food for the Food Bank. Well done to all who came along and supported the lunches. We must do it again!

The Easter Weekend was a glorious one when it came to the weather. It was also an important one for the Church. Our Easter Sunday Service was very special.

Update on Rev Ian's health ... he is slowly progressing and feeling a little better. He and Lynda thank everyone for their thoughts and prayers. Please keep up the good work.





TOWNLEY SCHOOL AND PRE-SCHOOL

Christchurch, Wisbech, Cambs. PE14 9NA

Email: office@townley.cambs.sch.uk

May 2019

Note from the Chair of Governors

A school is a bit like an iceberg in that there is a lot more going on 'behind the scenes'. Governors play an important role in this - making sure that the school has all of the Health & Safety processes, financial checks and Safeguarding procedures in place. It's often though that teachers benefit from long holidays too - but again so much goes on unseen. The last two weeks have been great examples of this, with Staff coming in almost every day, sometimes until 10 at night to reorganise our Darter Early Years Unit. With a whole new environment, signs and sand pit, it is looking great and there is more new equipment on the way! On behalf of the Governors, I would like to express very many thanks to all of you that have worked so willingly to update this fantastic learning space for our youngest

Thank You

Here at Townley School and Pre-School, we are extremely lucky to have wonderful, supportive parents. We would like to express a huge thank you to the following parents and families for their continued support in helping to make our school amazing.

Mr Neale and family for clearing and building our amazing sandpit (which the children have worked very hard in transporting One tonne of sand into!).

Mr and Mrs Abbott for the carpets they have supplied for Early Years.

Mr and Mrs Ford for their work clearing up the Early Years outside area. And a really big thank you all of the EYFS staff for their hard work over the holidays refreshing the Early Years Unit.

The Ballinger family who have donated lots of prizes to Emperor class for their twinklie box.

Friends Of Townley School

On the last day of the spring term, FOTS held their annual Easter Fair after school. There were lots of lovely things for sale and to games to play. They raised a fantastic £470!



Facebook—Townley School
and Pre-School





BRIAN TWEED *and* SON LTD

FAMILY BUTCHERS

FRESH BEEF, PORK, LAMB AND POULTRY
OUR SPECIALITIES ARE HOME MADE SAUSAGES AND BURGERS
HOME COOKED HAM, ROAST BEEF, ROAST PORK AND HASLETS
ALSO HOMEMADE PIES AND SAUSAGE ROLLS

Telephone: 01945 773248 48, Town Street, Upwell PE14 9DA

A JONES & SON

TELEVISION SALES/REPAIRS/INSTALLATION

FREE LOCAL DELIVERY
FIRST CLASS AERIAL INSTALLATIONS/ADDITIONAL POINTS

26 March Road, Wimblington, March, Cambs PE15 0RN

Tel: 01354 740320
CLOSED ALL DAY TUESDAYS



FENLAND LEISURE PRODUCTS
PLAY SOLUTIONS
SCHOOLS, PARKS &
LOCAL AUTHORITIES

Designing and manufacturing
play equipment in the UK for
over 21 years specialising in:

- Multiplay Towers
- Net Play
- Aerial Runway
- Outdoor Gyms
- Roundabouts & Seesaws
- Spring Rockers
- Slides
- Trim Trails
- BMX & Mountain Bike Tracks
- Seats & Bins
- Fencing
- Surfacing Solutions
- Bespoke Build Service



www.fenandleisure.co.uk

Tel: 01354 638359 Email: sales@fenandleisure.co.uk

Upwell Computer Repairs

Sales – Repairs - Maintenance - Upgrades

Sales & Support
Internet Setup
Virus Removal
Tuition
Web Design
Email Setup
System Installations
Data Recovery Services



Laptop Screen Replacement
Windows Reinstallation
Hardware Upgrades
Software Upgrades
On-Site Services
Custom Built PC's
Internet Security
Network Installations

Contact Lewis today for a free consultation

01945 772717 - 07849 778525

support@upwellcomputerrepairs.co.uk - www.upwellcomputerrepairs.co.uk

MAJESTIC

WINDOWS . DOORS . ROOFING
BI - FOLDS . CARPENTRY
CONSERVATORIES
COMPOSITE DOORS
HOUSE RENOVATIONS
GARAGE CONVERSIONS
FASCIA, SOFFIT, GUTTERS
FREE QUOTATIONS AVAILABLE

MIDDLE-MASS@LIVE.CO.UK

MOBILE : 07875 745125

OFFICE : 01354 461172

MARCH, CAMBS

42 **Uptown Fun**

brought to you by Partypackage Ltd



Opening times
Mon - Fri 9 - 5
Sat - 10 - 4

www.partypackage.co.uk

Fancy Dress, Gifts, Toys, Balloons, Partyware

Come and see us
Uptown Fun
42 Town Street
Upwell
PE14 9AD

Outwell Timber

For all your Timber and Building Supplies

ISLE ROAD, OUTWELL
PE14 8TD

Tel: 01945 77 21 16

FENCING, PANELS, TRELLIS
TIMBER, PLYWOOD, DECKING

SAND, BALLAST, GRAVEL

SCREWS, NAILS, BOLTS

PAINT, SILICONE, HAND TOOLS

LOCKS, ELECTRICALS, PLUMBING,
GUTTERING

UNDERGROUND PIPE & FITTINGS

CEMENT, MULTIFINISH, PLASTERBOARD

Useful Telephone Numbers

Age UK Cambridgeshire	0300 6669860
Alzheimer's Society (Fenland)	01945 580480
Christchurch Resident's Association	01354 638990
Churchwarden - Mrs. D. Symons	01354 638352
Citizens' Advice Bureau, Wisbech	01945 464367
Community Car Scheme (to book a journey)	07902 316360
Community Centre bookings	01354 638478
Community Fire Safety Officer	07717858166
District Councillor - Will Sutton	01354 638025
District Councillor - Michelle Tanfield	07908 707129
Electricity Faults - UK Power Networks	105
FACT	01354 661234
Fenland District Council	01354 654321
Floodline	0845 988 1188
Library - March	0354 0455225
National Debtline	0808 808 4000
Norfolk Dial-a-Ride	01553 770310
Parish Clerk - David Gibbs	07932 191050
Parish Councillor - Jill Bliss	01354 638343
Parish Councillor -	01354
Parish Councillor - Roger Gladwin	01354 638538
Parish Councillor - Geoff Harper	01354 638681
Parish Councillor - James Hughes	01354 638310
Parish Councillor - Peter Owen (Chair)	01354 638847
Parish Councillor - Kay Miller	01354 638232
Police - PCSO Sue Clarke	07738025220
Police - Emergency	999
Police - Non Emergency	101
Telephone Complaints	0345 145000
Townley School	01354 638229
Trading Standards	845040506
Train Information	08457 484950
Upwell Health Centre (and out of hours)	01945 773671
Upwell Health Centre - Pharmacy	01945 774934
Veterinary Centre - The Crossings (D'Mkt)	01366 382219
Vicars - Ian & Lynda Brady	01354 740627
Water Emergencies	08457 145145

Club Contacts

Art Club - Jan Clifford	01354 638217
Book Club - Sheila Day	07946 635908
Craft Club - Wendy Yates	01354 638448
Gardening Club - Marion Hawthorne	01354 638230
Short Mat Bowls Club - Wendy Keen	01945 772737
WI - Peggy Warby	01354 638339

Web links in the Heron are active when viewed in our online version www.theheron.info

Neighbourhood Watch

Colin Steenson - Church Rd (East)	638664
Sandra Kay - Crown Rd	638478
Shirley Knight - Church Rd (West)	638779
David Yates - Church Rd (West)	638448
Julian Swallow - Upwell Rd (North)	638679
Jackie Wood - Upwell Rd (North)	638679
Simon Freeland - Upwell Rd (South)	638802
Richard Guilford - Area Co-ordinator	638990
David Harrowing - District Co-ord.	01945 870963

And Finally!...

Blooming windy weather! Hurricane Hannah has a lot to answer for! You may have seen that the banner on my railings advertising the **Village Plant Sale over the Bank Holiday Weekend, on the 4th, 5th, and 6th of May** was completely ripped to pieces last Saturday! Another job to do which I



could have done without as I have a very busy week this week; not only procuring all the plants for the above, but preparing stuff for the cream teas and filled rolls too. Still we have a team meeting tomorrow (Monday) so should be able to get everything sorted. Not quite sure why but plant suppliers and nurseries seem to have raised their prices this year. However, not to worry. There will still be plenty of bargains to be had at the **Village Plant Sale**. Hope to see you all there! Let's hope Hannah will have blown herself out by then and we have some sunshine in which to sit and enjoy the famous **Cream Teas!**



'Till next time! - Ed'.

FUNDHERONRAISER

SATURDAY MAY 18th

**THE
ALAN NORRIS
BIG BAND**

*Glenn
Miller*

*American
Songbook*



Plus
**SPECIAL
GUESTS**

Rock & Roll

7.30

till 10.00pm

*Pop
Medleys*

DOORS OPEN 7.00pm

Christchurch Community Centre

*Filled Jacket Potatoes & Refreshments
will be served in the Interval*

£7.50

ENTRY

**GREAT NIGHTS
ENTERTAINMENT**

A Belated Easter Treat with all those spare eggs!

Egg production is at its peak right now with plenty to spare. In the days before hybrid chicken varieties, most of whom will lay all year round, folks used to say that hens were in lay between Valentine's Day and Guy Fawkes Night. I have a Copper Maran who lays the largest of dark brown eggs every single day of the year and right through the winter. Many others do too!

These seasonal potato and egg nests make a tasty, warming snack. Perfect for lunch, supper, or late breakfast. You can vary the mashed potato mixture by adding cheese, or finely chopped cabbage instead of the onion. Use your imagination! We've enjoyed them with bacon, spring onion tops (i.e. just the green bits) and cheese. Delicious! Highly recommended!

The recipe below serves two but it would be easy to double or halve the quantities. You could prepare the potato nests in advance, say for a party, or guests, then just bake with the eggs in place just before serving.

Ingredients:

1-2 rashers of chopped back bacon
1 teaspoon of oil (not needed if using cheese)
2-3 tablespoons of milk
A good teaspoon of butter plus extra for greasing
2 spring onions using more tender green parts
125gms of grated cheddar cheese
Approximately 450g of potatoes, peeled and mashed (still warm for best results)
Freshly ground black & ground white pepper to taste
2 small to medium eggs (you can use large but will need to make the nests deeper)

Method:

Preheat oven to 160°C (fan ovens / gas mark 4 or eqvt)
You will need a baking tray lined with buttered greaseproof paper.
Grill the bacon until slightly crispy on the edges, cool and chop reasonably small
Lightly fry the spring onions until soft
Once you have made your mashed potato add the spring onions and bacon, also the cheese if you wish. Divide the mixture in two (or more if using larger

quantities), make into a ball with your hands, place onto the greased paper on the baking tray and form into nests making the hollows large enough to take an egg. Make the base no more than 6 or 7mm thick
Bake the empty nests for 10mins



Remove nests from the oven and crack an egg into each. Return to the oven and bake for a further 12-15 minutes, keeping an eye on them. The mash should be piping hot and browning, the egg whites set, and the yolks runny. Serve with a fish slice onto warm plates.



Any views expressed in The Heron do not necessarily reflect the views of The Heron Editorial Team. The team aim to provide a balanced view of village opinions where such views are expressed. We reserve the right to edit any submissions where we feel this is appropriate.